

LONE PINE AIRRIESS ACRES

With Guests

**HMS HI-CLIFFE | CRITTENDEN LAND & CATTLE | JHF HEREFORDS
JUST ACRE FARMS | ROCK-N-ROLL POLLED HEREFORDS | LV FARMS**

Friday, October 14, 2022 - Vibank, Saskatchewan

SALE BEGINS AT 2PM

INVITATIONAL EVENT

Lot 9 from the 2020 Sale

PURCHASED AS A CALF BY JRP HEREFORDS



Sale Day INFORMATION

SALE STAFF

Auctioneer

Chris Poley 306-220-5006

T Bar C Cattle Co. Ltd.

Shane Michelson 403-363-9973
Ben Wright 519-374-3335

SALE DAY PHONES

Rob O'Connor 306-550-4890
Trevor Airriess 306-338-7753
Or any of the Sale Staff

INSURANCE

Alameda Agencies

Bonnie Thompson 306-489-2258

ACCOMODATIONS

Ramada Emerald Park/Regina East 306-525-5300
32-28 Great Plains Road, Emerald Park, SK S4L 1B8

Best Western Plus Eastgate Inn & Suites 306-352-7587
3840 E Eastgate Drive, Regina, SK S4P 2Z4

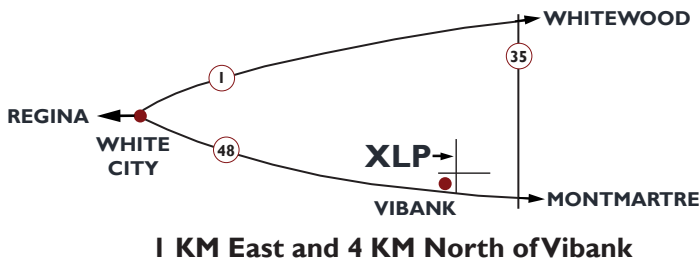
TRUCKING

H.S. Knill Co. Ltd. 877-442-3106

ONLINE BIDDING AVAILABLE



DIRECTIONS TO THE SALE



Be Part Of The Saskatchewan Sweep Steaks

- Friday, October 14 - Lone Pine & Airriess Acres Invitational Event - 2 PM
- Saturday, October 15 - ANL/Glenlees Polled Herefords & Guests - 1 PM
- Saturday, October 15 - C&T Cattle Co. & Guests "Take The Final Step" Sale - 5 PM
- Sunday, October 16 - Blair-Athol/Haroldson's & Friends - 1 PM
- Monday, October 17 - Square D Annual Production Sale - 1 PM



FROM THE DESK AT T BAR...

Welcome to the 2022 edition of the Lone Pine & Airriess Acres Invitational Event on Friday, October 14, 2022, at the Lone Pine headquarters, Vibank, Saskatchewan. Each year, Lone Pine/ Airriess Acres leads off the Saskatchewan Sweep Steaks weekend where breeders and livestock enthusiasts can take in five sales in four days. This is the most unique Hereford sale in the fall lineup where both juniors and seniors come together to celebrate the Hereford industry. Supporting and promoting youth in the cattle industry is not new for your hosts as Rob is an alumnus of the CJHA.

The 2022 lineup of sale cattle are by far the highest quality and competitive group ever offered to date. At the Southeast field day, these breeders proved to be very competitive, and those entries headline this event. The guest consignors are a combination of new breeders and seasoned veterans. These folks' herds are smaller in number; therefore, this is their production sale and as always open the gates to their front pastures. As you scan this catalogue you will find that many of the diverse genetics are amongst the finest in the industry and in most cases fit all breeding programs and budgets.

Over the next decade, you will hear the same line... "There is a shortage of breeding females in the beef industry!" ... and those who have been at a stockyard or auction have seen the strength of calf prices. The North American inventory is the lowest it has been in decades and rebuilding will take years.... Now is a great time to take a good look at your cow herd base, eliminate the old freeloaders and replace them with fresh, young, new generation breeding stock... simply because their cost will get higher in future.

Over the next month or so, plan to visit any of these progressive breeders and view their sale offering in natural conditions.... Do not hesitate to give the hosts (Rob and Dawn or Trevor and Sara) or any of the guests a call to discuss their sale entries and which will suit your breeding requirements.

Plan to be with us just west of Vibank on Friday October 14th for this the exciting start of the Saskatchewan Sweep Steaks whether it be in person, online or on the telephone, feel free to give anyone on the T Bar team a call ... we will be pleased to assist you in a professional and confidential manner with your selections.



CHRIS POLEY
306-220-5006



SHANE MICHELSON
403-363-9973



BEN WRIGHT
519-374-3335

Welcome **FROM YOUR HOSTS**

Dear Hereford Friends and Fellow Cattlemen,

Welcome to the 2022 edition of the Lone Pine/Airriess Acres Invitational event. Southeast Saskatchewan is a hot bed for Polled Hereford genetics and it's with great pleasure that we host the lead off sale during the Sweep- Steaks weekend. There is lots of opportunity for the members of our Hereford fraternity to select some great individual animals from many breeders. That's why the breeders who have partnered in this sale have collectively dug deep to provide our very best offering. We want to impress upon you just how good the cattle we raise are. I think you will agree that the investments these breeders have made in their herds has provided positive results that you can benefit from.



I want to bring special recognition to our sale partners Trevor and Sara Airriess. I don't know another family that has invested so heavily in this breed and progressed so quickly. They have become great friends and allies in this venture.

Generally, I don't recognize my family enough. Dawn, Lexie and Jessica have made great contributions to this farm. Dawn is the level headed, hard working, get her hands dirty type of person who keeps this farm looking great. Lexie has grown into being the backbone of this program, she has taken a keen interest in the cow herd, its productive genetics, and the feeding program. She also has a new interest in soil health and the study of carbon capture in Agriculture. And Jessica keeps it real, she supplies the humour and competitive spirit...she reminds me that competition is about winning banners and ribbons.

As always, we support the junior members of our breed. This year we are changing our support structure. Please read below to learn more about this exciting incentive program.

As always, when purchasing an animal that requires transportation we will work with you to arrange trucking and promise to deliver that animal to the nearest gathering point.

We invite you to our farm on October 14. But if you aren't able to attend in person, feel free to participate online through DV Auctions. We will have videos of the sale cattle available prior to the sale. I invite you to view the cattle prior to the sale, please feel free to call any of the consignors or sale staff. You can find their contact information on the inside covers of this catalogue.

We would be happy to assist you.

Sincerely,

Rob & Dawn & Connor

Lonepine **SHOW TEAM**



GRIT
CATTLE SERVICES
Indian Head, SK

Custom AI
Full herd estrus synch
AI supplies
Select Sires beef specialist

Ashley Kuttles
(306) 695-1540
grit@holmail.com

Bulger Draw
SPONSORED BY
GRIT CATTLE SERVICES



Class Winner

Lot 1 **KIRBY-LONEPINE MV SYBIL 37K**

PC03095807	18/01/2022	LPK 37K	POLLED
/S MANDATE 66589 ET	R LEADER 6964		
NJW 11B 6589 AUTHORITY 57G ET (DLF HYF IEF MSUDF)	/S LADY DOMINO 0158X		
NJW 792 10W RITA 11B	LJR 023 WHITMORE 10W		
	BW 91H 100W RITA 792 ET		
XLP 75Z KELSEY 66B	ANL A XLP ACTION ET 75Z		
KIRBY-LONEPINE SYBIL ET 37G	XLP 101S REESE 5Y		
KIRBY-LONEPINE SYBIL 403A	TH 71U 719T MR HEREFORD 11X		
	KIRBY-LONEPINE 5L SYBIL 403T		
EPD: BW: 2.8 // WW: 68.3 // YW: 104.4 // MM: 31.2 // TM: 65.4			

Sybil 37K represents the 9th generation of the Sybil cow family and she does so with style. A picture perfect calf that combines lots of hip and hindquarter with a strong top that flows cleanly in to her shoulders and front end. She's dark coloured, has great pigment around both eyes and is short marked. She is also developing a beautiful udder, which is what this family is known for. To top it off she has a wonderful disposition too. From the moment she was born she has impressed us, we knew this heifer was the perfect addition to our sale. Authority, her sire has done very well for us in his first year as part of our AI program. He has given many of his calves' great pigment, much like this one. Authority not only has given this heifer lots of growth, but has produced calves with excellent birthweights as is evident with 37K's 73 lb start. If you are interested in a competitive calf in the show ring she has already begun winning! On August 13th, she attended the South East Field day zone show; she placed first in her class and won Senior Heifer calf Champion. BW 73 lbs

Consigned with Mount Vern Polled Herefords and Kirby Polled Herefords

LONE PINE CATTLE SERVICES



NJW 11B 6589 Authority 57G ET
Sire



Kirby-Lonepine Sybil ET 37G
Dam at 15 months of age



RVP 8Y Globe Trotter 137G
Sire



Class Winner

Lot 2

XLP 137G RITA 323K

PC03095804	29/03/2022	XLP 323K	POLLED
NJW 73S W18 HOMEGROWN 8Y ET	SHF WONDER M326 W18 ET		
RVP 8Y GLOBE TROTTER ET 137G (DLF HYF IEF MSUDF MDF)	NJW P606 72N DAYDREAM 73S		
NJW 73S R117 DREAMIN 149X	SHF RIB EYE M326 R117		
	NJW P606 72N DAYDREAM 73S		
	NJW 73S M326 TRUST 100W ET		
XLP RITA 38T ET 132F	NJW BW LADYSPORT DEW 78P ET		
BAR-H RITA 38T	REMITALL RESISTOR 252R		
	BAR-H 941 GENNIE 24L		
EPD: BW: 3.8 // WW: 46.3 // YW: 76.3 // MM: 27 // TM: 50.1			

Class winner at the SE Saskatchewan Mark of Excellence Show! Rita 323K is deep ribbed, wide topped and is fancy too look at. We expect our show heifers to become brood matrons. I anticipate this calf will do that.
BW 85 lbs

Lot 3

XLP 137G SARA 822K

PC03095806	20/02/2022	XLP 822K	POLLED
NJW 73S W18 HOMEGROWN 8Y ET	SHF WONDER M326 W18 ET		
RVP 8Y GLOBE TROTTER ET 137G (DLF HYF IEF MSUDF MDF)	NJW P606 72N DAYDREAM 73S		
NJW 73S R117 DREAMIN 149X	SHF RIB EYE M326 R117		
	NJW P606 72N DAYDREAM 73S		
KIRBY-LONEPINE ENERGY 168C	TH 89T 743 UNTAPPED 425X ET		
XLP SARAH 822G	XLP CLF 57U BLANCHE 168Z		
XLP 75Z SARAH 228D	ANL XLP ACTION ET 75Z		
	OSF SARAH 521X 228A		
EPD: BW: 3.7 // WW: 53.7 // YW: 89.2 // MM: 28.7 // TM: 55.6			

OMG!!! This is a showy heifer that you won't want to miss. This fancy daughter of Globe Trotter is one that needs to find a show ring. She has the great look and the great hair that it takes. On top of that she is a great maternal blend of Sara, Blanche, Daydream, Bonnie Beth and the Priscilla cow families. Talk about stacking the deck!!!
BW 84 lbs



RVP 8Y Globe Trotter 137G
Sire



3



XLP 5J
Maternal Brother Lot 4



XLP 72H
Maternal Brother Lot 6

Lot 4

XLP 137G REESE 5K

PC03092862	18/01/2022	XLP 5K	POLLED
NJW 73S W18 HOMEGROWN 8Y ET		SHF WONDER M326 W18 ET	
RVP 8Y GLOBE TROTTER ET 137G (DLFHYFIEFMSUDFMDFF)		NJW P606 72N DAYDREAM 73S	
NJW 73S R117 DREAMIN 149X		SHF RIB EYE M326 R117	
		NJW P606 72N DAYDREAM 73S	
MHPH 2N WEBSTER 1131W		WILGOR 55K NORTHEASTERN OL 2N	
XLP 1131W REESE 5Z		MAY'S EMOTION 45H 112L	
HAROLDSON'S JVJ REESE 19D 5S		NJW 1Y WRANGLER 19D	
		HAROLDSON'S REESE 10H 97M	
EPD: BW: 3.8 // WW: 51.7 // YW: 84.4 // MM: 30.2 // TM: 56.1			

Reese 5K is a heifer that comes from another prolific cow family that has done exceptionally well for us. Her maternal brother was our high selling bull calf in our spring bull sale. The genetics in this family contribute both maternal power and excellent performance. BW 89lbs



Harvey 817H
His dam is a maternal sister to Kirby-Lonepine Sybil 423D

Lot 5

KIRBY-LONEPINE SYBIL 423K

PC03095797	12/01/2022	LPK 423K	POLLED
HOMEGROWN 8Y ET		SHF WONDER M326 W18 ET	NJW 73S W18
RVP 8Y GLOBE TROTTER ET 137G (DLFHYFIEFMSUDFMDFF)		NJW P606 72N DAYDREAM 73S	
NJW 73S R117 DREAMIN 149X		SHF RIB EYE M326 R117	
		NJW P606 72N DAYDREAM 73S	
KIRBY-LONE PINE SANTANA ET 91S		RU 20X GALAXY 58G	
KIRBY-LONEPINE SYBIL 423D		WTK 21F SYBIL 109J	
KIRBY-LONEPINE SYBIL 403A		TH 71U 719T MR HEREFORD 11X	
		KIRBY-LONEPINE 5L SYBIL 403T	
EPD: BW: 2.8 // WW: 49.7 // YW: 80.5 // MM: 35.9 // TM: 60.7			

This strong female is like her sire Globe Trotter, loves to show off her muscle. This female is another great addition to the Sybil cow family. I expect this female will produce herdsires.

Consigned with Kirby Polled Herefords

Lot 6

XLP 137G MINNIE 72K

PC03095789	16/01/2022	XLP 72K	POLLED
NJW 73S W18 HOMEGROWN 8Y ET		SHF WONDER M326 W18 ET	
RVP 8Y GLOBE TROTTER ET 137G (DLFHYFIEFMSUDFMDFF)		NJW P606 72N DAYDREAM 73S	
NJW 73S R117 DREAMIN 149X		SHF RIB EYE M326 R117	
		NJW P606 72N DAYDREAM 73S	
REMITALL HEATER 161U		BNMHPH 13P HEAT 101S	
BLAIR-ATHOL 161 WINNIE 72B		RU 2M DEBRA 141P	
BLAIR-ATHOL SCRATCH N WIN 103X		BLAIR-ATHOL FUTURE LUCK50U	
		BLAIR-ATHOL 13K MELBA MODE 95S	
EPD: BW: 2.6 // WW: 47.5 // YW: 83.5 // MM: 28.8 // TM: 52.6			

Another Globe Trotter daughter who is hard to flaw. She's feminine yet deep and muscular. Her Blair Athol bred dam has been a strong female that has produced sons and daughters that have been past highlights in our sales. BW 68 lbs



RVP 8Y Globe Trotter 137G
Sire



H RW All In 7165 ET
Sire



Lot 7

XLPA Marvel 97K

APPLIED FOR	20/01/2022	XLPA 97K	POLLED
JDH JJD 9Y 485T ALL IN 96B ET		KJ HVH 33N REDEEM 485T ET	
H RW ALL IN 7165 ET		JDH MS 26U CRACKER JACK 9Y ET	
EXR TERRI 489		MSU TCF REVOLUTION 4R	
		BR TERRI 9130 ET	
		CRR ABOUT TIME 743	
TH 89T UNTAPPED 425X ET		TH 16G 20N GEMINI 89T	
ANL 425X MARVEL 3807A 97D		SQUARE-D MANDATE 161X	
WCC 161X MARVEL 3807A		SQUARE-D LASSIE 9807W	
PE EPDS: BW: 4.0 // WW: 57.0 // YW: 93.0 // MM: 22.0 // TM: 51.0			

Lexie's bred and owned entry into the sale this year. The dam of this calf came from ANL, she was the first animal Lexie ever bid on. Her first calf was a feature in the spring bull sale. And she has produced several daughters that Lexie has kept to start her herd with. Even though she would rather keep another daughter, its time to start saving up for college!



H RW All In 7165 ET
Sire

Lot 8

Kirby-LonePine 137G Sybil 403K

APPLIED FOR	21/01/2022	LPK 403K	POLLED
JDH JJD 9Y 485T ALL IN 96B ET		KJ HVH 33N REDEEM 485T ET	
H RW ALL IN 7165 ET		JDH MS 26U CRACKER JACK 9Y ET	
EXR TERRI 489		MSU TCF REVOLUTION 4R	
		BR TERRI 9130 ET	
		GHC PREMIER 152M	
XLP KPH LCPH TRIBUTE ET 707B		CIRCLE-D 832W WILMA 19F	
KIRBY-LONEPINE SYBIL 403E		STAR OBF BOGART 5L	
KIRBY-LONEPINE 5L SYBIL 403T		KIRBY-LONEPINE 76J SYBIL 403L	
EPDS: BW: 3.7 // WW: 53.7 // YW: 87.5 // MM: 22.5 // TM: 49.5			

We started the heifer calf section with a Sybil and we will end it with a Sybil. 403K is a dark coloured & short marked calf that will become a really good cow. The daughters sired by ALL IN that I have seen have been excellent young cows. I expect this female will be the same.

Consigned with Kirby Polled Herefords





Class Winner



Maternal Grand Sire



Harvie Cool Water ET 190B
Sire

Lot 9 XLP 190B ZOOM ZOOM 702J

PC03095947 15/01/2021 XLP 702J POLLED

NJW 73S W18 HOMETOWN 10Y ET	SHF WONDER M326 W18 ET
HARVIE COOL WATER ET 190B {DLF HYF IEF MDF}	NJW P606 72N DAYDREAM 73S
HARVIE MS FIREFLY 65P	HARVIE LADIES MAN 4L
	HARVIE MISS FIREFLY 51F
CHURCHILL KICKSTART 501CET	CHURCHILL RED BULL 200Z
XLP ZOOM ZOOM 702G	HVH OKSANA 4L 33N
ELM-LODGE PRE BA EYECANDY 702E	CRR 109 OLD SCHOOL 301
	ELM-LODGE ZOOM ZOOM 45Z

EPD: BW: 1.5 // WW: 54.4 // YW: 87.2 // MM: 29.4 // TM: 56.6

We have been blessed with a remarkable set of yearling heifers. It was hard to choose which to start this section of the catalogue with. But once Zoom Zoom won her class at the South East MOE show and was named Reserve Champion yearling...my mind was made up. I admire this female's depth, colour and udder development. This is a new cow family that we introduced into the herd after purchasing her grand dam from Elm-Lodge, Brendale and Premier Livestock just prior to her winning the Royal Winter Fair Female Futurity.
BW 67 lbs

Exposed to ANL CL 206E Bottom Line 74 39J from June 2, 2022- Sept.7, 2022

Lot 10 XLP 190B DAYDREAM 73J

PC03084587 05/01/2021 XLP 73J POLLED

NJW 73S W18 HOMETOWN 10Y ET	SHF WONDER M326 W18 ET
HARVIE COOL WATER ET 190B{DLF HYF IEF MDF}	NJW P606 72N DAYDREAM 73S
HARVIE MS FIREFLY 65P	HARVIE LADIES MAN 4L
	HARVIE MISS FIREFLY 51F
CRR ABOUT TIME 743	THM DURANGO 4037
XLP DAYDREAM ET 73G	CRR D03 CASSIE 206
NJW 73S R117 DREAMIN 149X	SHF RIB EYE M326 R117
	NJW P606 72N DAYDREAM 73S

EPD: BW: 0.6 // WW: 48.1 // YW: 79.2 // MM: 33.7 // TM: 57.8

Daydream x Firefly = great female genetics!!! I fell in love with the consistency that these two cow families have demonstrated in this breed. They are two of the most important families for Ned and Jan Ward and the Harvie family over the last decade.
BW 65 lbs

Observed breeding to ANL CL 206E Bottom Line 74 39J on May 17, 2022
Exposed to ANL CL 206E Bottom Line 74 39J from May 17, 2022- Sept.7, 2022



Harvie Cool Water ET 190B
Sire



Lot 11 KIRBY-LONEPINE 355B UNIQUE 36J

PC03086301	17/02/2021	LPK 36J	POLLED
XLP 91S DOC HOLIDAY 38Z		KIRBY-LONE PINE SANTANA ET 91S	
XLP 38Z POLLED SCRIPT 355B {DLF HYF IEF}		BAR-H RITA 38T	
XLP 187 JULIET 355Y		SR SCRIPT 187	
		NN 9454 JULIET 355W	
		TH 122 711 VICTOR 719T	
TH 71U 719TMR HEREFORD 11X		TH 7N 45P RITA 71U	
KIRBY-LONEPINE UNIQUE 36E		BBSF 101N WRANGLER 29W	
HF 29W UNIQUE LADY 36Z		MISS 87D FORTUNE 707B 67J	
EPD: BW: 1.2 // WW: 41.6 // YW: 67.0 // MM: 27.3 // TM: 48.1			

My goal as a seed stock producer is to develop our own genetics to offer the breed. Unique 36J is just that...she offers a unique blend of genetics that is not common. It all started by acquiring a calf of the sister to Agribition Supreme Champion HF Beyond. While at the same time developing a new sire line which we named Polled Script. We crossed these genetics to offer this female. We haven't offered many Polled Script daughters for sale as I'm keeping most of them for myself...because they are excellent cows. Consigned with Kirby Polled Herefords BW 70 lbs

AI bred to ANL CL 206E Bottom Line 74 39J on May 18, 2022
 Exposed to RSK 173D Command ET 91H from June 8, 2022- Sept.7, 2022



Lot 12 XLP 41F REESE 502J

PC03086310	11/04/2021	XLP 502J	POLLED
CHURCHILL KICKSTART 501C ET		CHURCHILL RED BULL 200Z	
XLP THUNDER 41F {DLF HYF IEF MSUDF}		HVH OKSANA 4L 33N	
PCL TORI 118U 41A		MHPH 101S UMPIRE 118U	
		GLENROSE 3N TORI 116T	
		TH 89T 743 UNTAPPED 425X ET	
ANL XLP ACTION ET 75Z		ANL PBG 3N SPLENDOUR 143T	
XLP 75Z REESE 500F		BNMHPH 13P HEAT 101S	
XLP 101S REESE 500Y		HAROLDSON'S JVJ REESE 19D 5S	
EPD: BW: 6.3 // WW: 66.1 // YW: 104.8 // MM: 23.9 // TM: 57.0			

Reese 502J is a pleasure to look at. So smooth and complete. She exemplifies the type of cow that lasts forever. Maternally she is part of the Reese family. Paternally she is part of the Tori family. She is bred to Globe Trotter...meaning the resulting calf will include two shots of Daydream! A powerful genetic combination.
 BW 96 lbs

Observed breeding to RVP 8Y Globe Trotter ET 137G on May 17, 2022
 Exposed to Kirby-Lonepine Budweiser 176J from June 8, 2022- Aug.25, 2022



XLP Polled Script 355B
Sire

Lot 12 XLP 41F REESE 502J

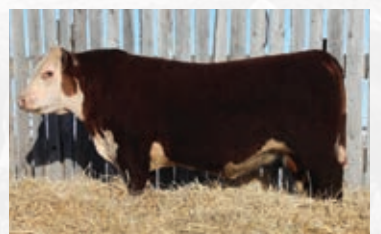
PC03086310	11/04/2021	XLP 502J	POLLED
CHURCHILL KICKSTART 501C ET		CHURCHILL RED BULL 200Z	
XLP THUNDER 41F {DLF HYF IEF MSUDF}		HVH OKSANA 4L 33N	
PCL TORI 118U 41A		MHPH 101S UMPIRE 118U	
		GLENROSE 3N TORI 116T	
		TH 89T 743 UNTAPPED 425X ET	
ANL XLP ACTION ET 75Z		ANL PBG 3N SPLENDOUR 143T	
XLP 75Z REESE 500F		BNMHPH 13P HEAT 101S	
XLP 101S REESE 500Y		HAROLDSON'S JVJ REESE 19D 5S	
EPD: BW: 6.3 // WW: 66.1 // YW: 104.8 // MM: 23.9 // TM: 57.0			

Reese 502J is a pleasure to look at. So smooth and complete. She exemplifies the type of cow that lasts forever. Maternally she is part of the Reese family. Paternally she is part of the Tori family. She is bred to Globe Trotter...meaning the resulting calf will include two shots of Daydream! A powerful genetic combination.
 BW 96 lbs

Observed breeding to RVP 8Y Globe Trotter ET 137G on May 17, 2022
 Exposed to Kirby-Lonepine Budweiser 176J from June 8, 2022- Aug.25, 2022



XLP 5J
Full Sister to XLP 75Z Reese 500F



XLP Thunder 41F
Sire



Maternal Grand Sire



Kirby-Lonepine Prince ET 10E
Sire

Lot 13

XLP 10E BAMBI 108J

PC03086296 23/02/2021 XLP 108J POLLED

XLP 75Z KELSEY 55B
KIRBY-LONEPINE PRINCE ET 10E (DLF HYF IEF MSUDF) TH 71U 719T MR HEREFORD 11X
 KIRBY-LONEPINE SYBIL 403A
 KIRBY-LONE PINE SANTANA ET 91S
XLP 91S BAMBI 108W
 XLP 2103 BAMBI 1008P {DLF HYF IEF

ANL A XLP ACTION ET 75Z
 XLP 101S REESE 5Y
 TH 71U 719T MR HEREFORD 11X
 KIRBY-LONEPINE 5L SYBIL 403T
 RU 20X GALAXY 58G
 WTK 21F SYBIL 109J
 DCCTHOMASTON 2103 ET
 MISTERS 209G KENNEDY 1008K

EPD: BW: 0.5 // WW: 38.1 // YW: 60.4 // MM: 26.9 // TM: 46.0

Deep sided and saggy best describes Bambi. Her dam has been an excellent producer of both bulls and brood cows. You will also notice that 108J's pedigree includes both the Reese and Sybil. And if you look back 5 and 6 generations the Blanche family appears 3 times.
 BW 75lbs

Observed breeding to ANL CL 206E Bottom Line 74 39J on May 14, 2022
 Exposed to ANL CL 206E Bottom Line 74 39J from May 17, 2022- Sept.7, 2022

Lot 14

XLP 10E SARA 822J

PC03086309 26/03/2021 XLP 822J POLLED

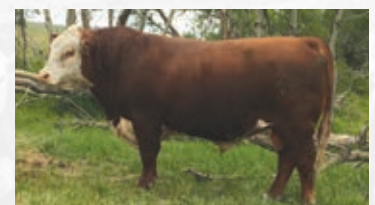
XLP 75Z KELSEY 55B
KIRBY-LONEPINE PRINCE ET 10E (DLF HYF IEF MSUDF) TH 71U 719T MR HEREFORD 11X
 KIRBY-LONEPINE SYBIL 403A
 ANL A XLP ACTION ET 75Z
XLP 75Z SARAH 228D
 OSF SARAH 521X 228A

ANL A XLP ACTION ET 75Z
 XLP 101S REESE 5Y
 TH 71U 719T MR HEREFORD 11X
 KIRBY-LONEPINE 5L SYBIL 403T
 TH 89T 743 UNTAPPED 425X ET
 ANL PBG 3N SPLENDOUR 143T
 TH 122 71I VICTOR 521X ET
 HAROLDSONS SARAH T100 59Y

EPD: BW: 1.4 // WW: 46.1 // YW: 73.6 // MM: 24.8 // TM: 47.9

This is a broody heifer. I love her easy keeping appearance. Like all the members of the Sara family she will be an easy one to maintain. We will be showing her dam's maternal brother at the fall shows. Make sure you see him sale day.
 BW 75lbs

AI bred to TH Big Country 537G on May 18, 2022
 Exposed to ANL CL 206E Bottom Line 74 39J from June 8, 2022- Sept.7, 2022



Kirby-Lonepine Prince ET 10E
Sire



Kirby-Lonepine Prince ET 10E
Sire

Lot 15

XLP 10E TORI 441J

PC03086307	22/03/2021	XLP 441J	POLLED
XLP 75Z KELSEY 55B		ANL A XLP ACTION ET 75Z	
KIRBY-LONEPINE PRINCE ET 10E {DLF HYF IEF MSUDF}		XLP 101S REESE 5Y	
KIRBY-LONEPINE SYBIL 403A		TH 71U 719T MR HEREFORD 11X	
		KIRBY-LONEPINE 5L SYBIL 403T	
		TH 89T 743 UNTAPPED 425X ET	
KIRBY LONEPINE ENERGY 168C		XLP CLF 57U BLANCHE 168Z	
XLP TORI 141G		MHPH 101S UMPIRE 118U	
PCL TORI 118U 41A		GLENROSE 3N TORI 116T	
EPD: BW: 3.5 // WW: 50.0 // YW: 78.8 // MM: 21.1 // TM: 46.1			

Another fully pigmented daughter of Prince 10E. We used this bull on heifers for moderating birth weights and adding pigment. Tori 441J is the grand daughter of 41A show was purchased at the Autumn Alliance sale with the intention of starting a new line. We have some daughters but most importantly we are using a son, Thunder 41F as our senior herdsire. BW 80 lbs

Observed breeding to ANL CL 206E Bottom Line 74 39J on June 17, 2022
Exposed to ANL CL 206E Bottom Line 74 39J from May 17, 2022- Sept.7, 2022



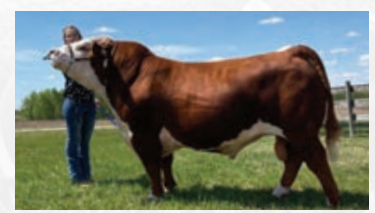
Lot 16

XLP 137G RANDI 732J

PC03086298	06/02/2021	XLP 732J	POLLED
NJW 73S W18 HOMEGROWN 8Y ET		SHF WONDER M326 W18 ET	
RVP 8Y GLOBE TROTTER ET 137G {DLF HYF IEF MSUDF MDF}		NJW P606 72N DAYDREAM 73S	
NJW 73S R117 DREAMIN 149X		SHF RIB EYE M326 R117	
		NJW P606 72N DAYDREAM 73S	
		REMITALL-W START ME UP ET 7B	
TH 745A 7B START ME UP 71D		RANGELINE 11Y MISS WORLD 745A	
ANL 71D RANDI 12C 132F		TH 122 71I VICTOR 521X ET	
ANL 521X RANDI 10A 12C		ANL P606 RANDI 10A	
EPD: BW: 1.4 // WW: 52.4 // YW: 83.1 // MM: 30.2 // TM: 56.4			

Deep and Stout! That is how Globe Trotter makes them and 732J is a great example of that. Randi will catch your eye. Her dam was junior calf champion at the SE Sask Mark of Excellence show BW 68 lbs

Observed breeding to ANL CL 206E Bottom Line 74 39J on June 17, 2022
Exposed to ANL CL 206E Bottom Line 74 39J from May 17, 2022- Sept.7, 2022



RVP 8Y Globe Trotter 137G
Sire



Lot 17 **XLP 137G TORI 241J**
 PC03086302 07/03/2021 XLP 241J POLLED
 NJW 73S W18 HOMEGROWN 8Y ET
RVP 8Y GLOBETROTTER ET 137G (DLF HYF IEF MSUDF MDF) SHF RIB EYE M326 R117
 NJW 73S R117 DREAMIN 149X
 SHF WONDER M326 W18 ET
 NJW P606 72N DAYDREAM 73S
 NJW P606 72N DAYDREAM 73S
 BNMHPH 13P HEAT 101S
 CHURCHILL LADY 3117
 ANL A XLP ACTION ET 75Z
 PCL TORI 118U 41A
 XLP 101S FEVER ET 925E
XLP FOXY TORI 41G
 XLP 75Z FOXY TORI 41E
 EPD: BW: 6.5 // WW: 59.1 // YW: 96.9 // MM: 31.9 // TM: 61.5

Tori 241J is a solid female. Her skeletal design is made so well I expect she will produce well into the next decade.
 BW 90 lbs

Observed breeding to ANL CL 206E Bottom Line 74 39J on June 3, 2022
 Exposed to ANL CL 206E Bottom Line 74 39J from May 17, 2022- Sept.7, 2022



RVP 8Y Globe Trotter 137G
 Sire

Lot 18 **KIRBY-LONEPINE SYBIL 43J**
 PC03084554 14/03/2021 LPK 43J POLLED
 ANL A XLP ACTION ET 75Z
XLP ACTION JACKSON 500E (DLF HYF IEF MSUDF)
 XLP 101S REESE 500Y
 TH 89T 743 UNTAPPED 425X ET
 ANL PBG 3N SPLENDOUR 143T
 BNMHPH 13P HEAT 101S
 HAROLDSON'S JVJ REESE 19D 5S
 TH 122 711 VICTOR 719T
 TH 7N 45P RITA 71U
 STAR OBF BOGART 5L
 KIRBY-LONEPINE 76J SYBIL 403L
 TH 71U 719T MR HEREFORD 11X
KIRBY-LONEPINE SYBIL 403A
 KIRBY-LONEPINE 5L SYBIL 403T
 EPD: BW: 3.0 // WW: 51.9 // YW: 81.9 // MM: 28.0 // TM: 54.0

The next 4 females are sired by Action Jackson. This attractive bull is full pedigree brother to Kelsey. We were only able to use him for one year due to a foot injury but we were fortunate to get many heifer calves. 43J is a natural daughter of the donor Sybil 403A. From the same family as our high selling 2 yr old bull this year. Consigned with Kirby Polled Herefords
 BW 76 lbs

Observed breeding to ANL CL 206E Bottom Line 74 39J on May 17, 2022
 Exposed to ANL CL 206E Bottom Line 74 39J from May 17, 2022-Sept.7, 2022



Harvey 817H
 His dam is a maternal sister to Kirby-Lonepine Sybil 403A



XLP Action Jackson 500E
 Sire

LONE PINE CATTLE SERVICES

Lot 19 KIRBY-LONEPINE UNIQUE 136J

PC03086304	18/03/2021	LPK 136J	POLLED
ANL A XLP ACTION ET 75Z		TH 89T 743 UNTAPPED 425X ET	
XLP ACTION JACKSON 500E {DLF HYF IEF MSUDF}		ANL PBG 3N SPLENDOUR 143T	
XLP 101S REESE 500Y		BNMHHP 13P HEAT 101S	
		HAROLDSON'S JVJ REESE 19D 5S	
BBSF 101N WRANGLER 29W		BLAIR-ATHOL 13K MAJOR 101N	
HF 29W UNIQUE LADY 36Z		BBSF 19D UNIQUE 1P	
MISS 87D FORTUNE 707B 67J		TEE-JAY 707B FORTUNE 4F	
		MISS 77S VARSITY VIC 87D	
EPD: BW: 6.4 // WW: 55.9 // YW: 94.5 // MM: 26.7 // TM: 54.7			

The final daughter of HF Unique Lady 36Z. She's big, She's soggy. She'll make a good brood cow. Being bred to Command will add some additional shape and colour. Consigned with Kirby Polled Herefords
BW 92 lbs

AI bred to RSK 173D Command ET 91H on May 17, 2022
Exposed to Kirby-Lonepine Budweiser 176J from June 8, 2022-Aug.25, 2022



Lot 20 XLP 500E MONA 551J

PC03086305	18/03/2021	XLP 551J	POLLED
ANL A XLP ACTION ET 75Z		TH 89T 743 UNTAPPED 425X ET	
XLP ACTION JACKSON 500E {DLF HYF IEF MSUDF}		ANL PBG 3N SPLENDOUR 143T	
XLP 101S REESE 500Y		BNMHHP 13P HEAT 101S	
		HAROLDSON'S JVJ REESE 19D 5S	
ANL A XLP ACTION ET 75Z		TH 89T 743 UNTAPPED 425X ET	
XLP 75Z MONA 51D		ANL PBG 3N SPLENDOUR 143T	
BLAIR-ATHOL H MONA 51A		REMITALL HEATER 161U	
		BLAIR-ATHOL 103 MONA 30U	
EPD: BW: 6.3 // WW: 60.8 // YW: 101.2 // MM: 26.4 // TM: 55.8			

One of our top gaining yearling heifers at the test centre last winter. This is another big broody female. She has a little extra length too. TH Big Country is one of the top young sires in North America. I anticipate the resulting calf from this mating to catch some attention.
BW 92 lbs

AI bred to TH Big Country 537G on May 17, 2022
Exposed Kirby-Lonepine Budweiser 176J from June 8, 2022-Aug.25, 2022



Lot 21 XLP NIGHTINGALE 721J

PC03086287	24/03/2021	XLP 721J	POLLED
ANL A XLP ACTION ET 75Z		TH 89T 743 UNTAPPED 425X ET	
XLP ACTION JACKSON 500E {DLF HYF IEF MSUDF}		ANL PBG 3N SPLENDOUR 143T	
XLP 101S REESE 500Y		BNMHHP 13P HEAT 101S	
		HAROLDSON'S JVJ REESE 19D 5S	
BIG-GULLY 611 BOUNTY 517U		KSU BOUNTY HUNTER 611	
XLP NIGHTINGALE 721D		BIG-GULLY GOLD DUST LASSY 217R	
XLP 002 NIGHTINGALE ET 721U		NS LAKES KILO 002	
		ELM-LODGE 10C NIGHTINGALE 21N	
EPD: BW: 7.0 // WW: 60.0 // YW: 96.7 // MM: 24.5 // TM: 54.5			

Maternally this female offers a different genetic package. She is long spined. She has excellent bone like her maternal grandsire Bounty 517U. She sells bred to Budweiser 176J who is a son of ALL IN. Maternally he is from the Lexus cow family. His brother is TOP BRASS a past high seller in our bull sale now owned by Roger, Joan and Jesse Procyk.
BW 94 lbs

Exposed to Kirby-Lonepine Budweiser 176J from July 1, 2022- Aug.25, 2022



XLP Action Jackson 500E
Sire



ANLA XLP Action ET 75Z
Grandsire Lots 12, 14, 18 - 21
Great Grandsire Lots 1, 3, 13, 14, 15, 17

REFERENCE SIRES

ANL CL 206E BOTTOM LINE 74 39J

Ref Sire

PC03083846	31/01/2021	KKL 39J	POLLED
TH 403A 475Z PIONEER 358C ET		TH 89T 755T STOCKMAN 475Z	
TH 13Y 358C BOTTOM LINE 206E {DLF HYF IEF MSUDF MDF}		TH 71U 17Y RITA 403A	
TH 54W 719T BETH 13Y		TH 122 711 VICTOR 719T	
		TH 6S 45P BETH 54W	
GRANDVIEW 70AKS SONORA 145R		REMITALL ONLINE 122L	
ANL CL 145R WESTWIND 45W 74D		DJB 46B BETH 1L	
MOHICAN WESTWIND 45W		WLB EU 10H 83T	
		MOHICAN WESTWIND 89S	
EPD: BW: 4.2 // WW: 64.3 // YW: 106.3 // MM: 22.8 // TM: 55.0			

- New Herdsire
- Deep sided
- Masculine and easy fleshing



RSK 173D COMMAND ET 91H {DLF HYF IEF MSUDF MDF}

Ref Sire

PC03073323	17/02/2020	RSK 91H	POLLED
KCF BENNETT ENCORE Z311 ET		SCHU-LAR ON TARGET 22S	
NW 79Z Z311 ENDURE 173D ET {DLF HYF IEF MSUDF MDF}		KCF MISS REVOLUTION X338	
BW 91H 100W RITA 79Z ET		NJW 73S M326 TRUST 100W ET	
		REMITALL RITA 91H	
H/TSR/CHEZ/FULL THROTTLE ET		H WCC/WB 668 WYARNO 9500 ET	
NEXT GEN RIESLING 295 ET {MSUDF}		R SWEET RED WINE 039	
STAR SPIRIDGE KESSEY 321L ET		STAR SS THUNDER LT 62J	
		SSF KEYSHA 949	
EPD: BW: 4.2 // WW: 79.8 // YW: 125.2 // MM: 24.9 // TM: 64.8			

- Top 1% for WW and YW
- Eye appeal & Show ring style
- Daughter recently won Senior Heifer Champion at MB MOE Show



TH BIG COUNTRY 537G ET {DLF HYF IEF MSUDF}

Ref Sire

P44004759	02/07/2019	537G	POLLED
TH 403A 475Z PIONEER 358C ET		TH 89T 755T STOCKMAN 475Z	
TH FRONTIER 174E {DLF HYF IEF MSUDF MDF}		TH 71U 17Y RITA 403A	
FTF TRUSTING LADY 312A		NJW 73S M326 TRUST 100W ET	
		FTF BOOM AND BLOOM 8211U	
FTF PROSPECTOR 145Y		HUTH PROSPECTOR K085	
TH 506X 145Y DOMINETTE 533B ET {DOD DLF HYF IEF}		FTF CHICK A BOOM 7227T	
TH 122 711 DOMINETTE 506X ET		DRF JWR PRINCE VICTOR 711	
		KBCR 19D DOMINETTE 122	
EPD: BW: -2.1 // WW: 65 // YW: 97 // MM: 46 // TM: 79			

- Trait leader in 10 categories
- Huge maternal EPD's
- Deep sided



KIRBY-LONEPINE BUDWEISER 176J

Ref Sire

PC03086297	18/02/2021	LPK 176J	POLLED
JDH JJD 9Y 485T ALL IN 96B ET		KJ HVH 33N REDEEM 485T ET	
H RW ALL IN 7165 ET {DLF HYF IEF MSUDF MDF}		JDH MS 26U CRACKER JACK 9Y ET	
EXR TERRI 489		MSU TCF REVOLUTION 4R	
		BR TERRI 9130 ET	
MAPLE-DALE UNLEASHED ET 6Z		TRIARA UNLEASHED 893U	
KIRBY-LONEPINE 6Z LEXUS 765B		CHURCHILL LADY 3117	
SQUARE-D LEXUS 765P		SQUARE-D STINGER 779K	
		SQUARE-D JAYNE 566K	
EPD: BW: 4.3 // WW: 57.2 // YW: 87.5 // MM: 23.5 // TM: 52.1			

- Generations of udder strength
- Deep ribbed
- Smooth and clean made



H RW All In 7165 ET
Sire

LONE PINE CATTLE SERVICES



Welcome to our annual sale. The cattle line up from all the consignors look great. Thank you to Rob and Dawn for all their hard work in having the sale take place at their farm.

We are very pleased with our offering as we feel the bred's are very consistent and are bred to meet anyone's calving time. The fancy heifer calves are out of our top group.

We look forward to seeing you on sale day. Watch for videos on buyagro.

Trevor and Sara



Lot 22 AIRRIESS-ACRES ATHENA 8K (DLF HYF IEF MUDF)

PC03093091	01/01/2022	TSA 8K	HOMO POLLED
WHITEHAWK WARRIOR 845C ET		UPH PROSPECTOR P152	
CRITT PROSPECT ET 4H (DLF HYF IEF MSUDF)		GRANDVIEW CMR 4003 BETHY I I5ET	
HAROLDSONS JVJ SARAH 521X 14Z		TH 122 711VICTOR 521X ET	
		HAROLDSON'S ANL SARAH T100 35W	
		NJW 67U 28M BIG MAX 22Z	
NJW 79Z 22Z HEAVY DUTY 72C ET		BW 91H 100W RITA 79Z ET	
AIRRIESS-ACRES SIERRA 12G		SQUARE-D NORTHLINE 129X	
SQUARE-D NORA 84A		SQUARE-D GINA 840T	
EPD'S: BW: 2.4 // WW: 63.5 // YW: 103.0 // MM: 35.9 // TM: 67.7			

- red necked with pigment
- lots of hip and depth with eye appeal
- quiet and halter broke as we showed her a few times this summer
- off a real nice uddered 3 yr old cow



Boyd Power Surge 9024
Sire



ANL 17U Tammy 96A
Dam

Lot 23 AIRRIESS-ACRES SAMARA 92K (DLF HYF IEF MUDE)

PC03093413 27/01/2022 TSA 92K HETERO POLLED

BOYD 31Z BLUEPRINT 6153	R LEADER 6964
BOYD POWER SURGE 9024 (DLF HYF IEF MSUDF MDF) TH 403A 475Z PIONEER 358C ET	NJW 91H 100W RITA 31Z ET
TH 329 358C LANA 76E	FTF 7227 MS LOGIC 329A
ANL P606 UNIVERSE ET 17U	PW VICTOR BOOMER P606
ANL 17U TAMMY 96A	ANL 57G MINDY 14L
MA 744T TAMMY 16U 47Y	JPH 910J 36N ARSENAL 744T
	MEADOW-ACRES HR TAMMY ET 16U

EPD'S: BW: 3.7 // WW: 60.2 // YW: 100.6 // MM: 25.7 // TM: 55.8

- sharp fronted
- big hipped with style
- red necked and out of a strong cow family
- halter broke and quiet
- first Power Surge heifer calves to sell

Lot 24 AIRRIESS-ACRES PEGGY 15J

PC03082100 03/01/2021 TSA 15J POLLED

ANL C HART 100 TAHOE 86 ET 23B	SHF TAHOE R117T100
GHC FARMER 53F (DLF HYF IEF)	ANL 7N MAPLE 86R
GHC MISS GOVERNESS 40B	SHF MANNING W18 Z22
	GHC MISS DONNA 71P
WCC 42S PLATINUM 213A	REMITALL SUPER DUTY 42S
SQUARE-D PLATINUM 630D	STAR TREASURE CHEST 213U
SQUARE-D GINA 230R	SQUARE-D CONQUER ET 44N
	SQUARE-D MAXINE 733M

EPD'S: BW: 2.9 // WW: 59.0 // YW: 91.4 // MM: 25.1 // TM: 54.6

- dark red, easy doing, deep made heifer
- full sister calved out this year with a great udder and good maternal

Exposed to PCL 4013 Gainer 116 March 25, 2022-July 10, 2022. Observed bred May 17, 2022.
Preg check confirms





Lot 25 **AIRRIESS-ACRES BELLE 23J**

PC03082107 07/01/2021 TSA 23J POLLED

R LEADER 6964
BOYD 31Z BLUEPRINT 6153 (DLF HYF IEF MSUDF MDF) NJW 73S M326 TRUST 100W ET
 NJW 91H 100W RITA 31Z ET

HI-CLIFFEWLB SAMMY 13X
HMS HCF 13X BELLATRIX 134B
 SHPH 66W MAGIE 134Z

HYALITE ON TARGET 936
 R MISS REVOLUTION 1009
 REMITALL RITA 91H
 DTHFTANK 64T
 HI-CLIFFE 5J SAMMY 63S
 SHPH 274S BARON 66W
 SHPH 63N LAVISH 127T

EPD'S: BW: 5.0 // WW: 60.6 // YW: 98.1 // MM: 28.3 // TM: 58.6

-lots of style, length and hip
 -pigmented and red necked

Exposed to PCL 4013 Gainer 116 April 30, 2022-July 10, 2022. Observed bred May 8, 2022.
 Preg check confirms

Lot 26 **AIRRIESS-ACRES JOJO 30J**

PC03082110 10/01/2021 TSA 30J POLLED

NJW 73S M326 TRUST 100W ET
BEHM 100W CUDA 504C (DLF HYF IEF MSUDF MDF) BEHM R294 JASMANI02Y

TH 122711VICTOR 719T
TWIN-VIEW 719T EDITH 5G
 TWIN-VIEW 83Z ELAINE 36E

KCF BENNETT 3008 M326
 NJW P606 72N DAYDREAM 73S
 KCF BENNETT 9126J R294
 CPH MSWRANGLER 1W
 DRF JWR PRINCEVICTOR 71I
 KBCR 19D DOMINETTE 122
 TWIN-VIEW 4L MACK DADDY 83Z
 TWIN-VIEW 99W ERIN 12Z

EPD'S: BW: 2.6 // WW: 63.7 // YW: 101.2 // MM: 36.0 // TM: 67.9

-nice made Cuda daughter out of a hard working first calver
 -feminine with lots of length

Exposed to PCL 4013 Gainer 116 from April 30, 2022-July 10, 2022. Observed bred May 18, 2022.
 Preg check confirms





GHC Miss Positive ET 7D
Dam

Lot 27 AIRRIESS-ACRES JENAYA 31J

PC03082111	11/01/2021	TSA 31J	POLLED
ANL C HART100 TAHOE 86 ET 23B GHC FARMER 53F (DLF HYF IEF) GHC MISS GOVERNESS 40B	SHFTAHOE R117T100 ANL 7N MAPLE 86R SHF MANNING W18 Z22 GHC MISS DONNA 71P	K&B SENTINEL 0042X SHF MISS M326 T08 ET MCCOY 55MABSOLUTE 49S MCCOY 29R MISS MILLIONAIRE 35T	
SHFALL STAR 42XA191 GHC MISS POSITIVE ET 7D MCCOY 49S KALLA 61W			

EPD'S: BW: 3.6 // WW: 62.8 // YW: 102.0 // MM: 26.1 // TM: 57.5

-lots of length and overall completeness in her makeup
-off a strong cow

Bred April 7, 2022 to SHF Horizon D287 H022 ET. Exposed to PCL 4013 Gainer 116 from April 30, 2022-July 10, 2022.
Preg check confirms safe to April 7, 2022 breeding date

Lot 28 AIRRIESS-ACRESTT CALLIE 35J

PC03082101	12/01/2021	TSA 35J	POLLED
SHF CANNON Z210 C95 GHC SCHWARZKOPF 125E (DLF HYF IEF MSUDF) GHC MISS GALAXY ET 208Z	GV CMR X151 MR 847 Z210 SHF MISTY 33T Y35 RU 20X GALAXY 58G CARLSONS KATHY D2	TH 745A 7B START ME UP 71D ANL C 71D XCALIBER 26X 14F TIL-TOBA XCALIBER 315U 26X	REMITALL-W START ME UP ET 7B RANGELINE 11Y MISS WORLD 745A GHADAMS 179R STANLEY 180U XLP CLF 61P SARA 315U

EPD'S: BW: 1.6 // WW: 53.0 // YW: 86.3 // MM: 26.1 // TM: 52.6

-big barreled, smooth made heifer
-off an easy doing nice uddered cow

Exposed to PCL 4013 Gainer 116 April 30, 2022-July 10, 2022. Observed bred May 2, 2022.
Preg check confirms
Owned with Til Toba Herefords



ANL C 71D Xcaliber 26X 14F
Dam



RU BA 744T Alice 264B
Dam

Lot 29 AIRRIESS-ACRES ALLIE MAE 50J

PC03082207	15/01/2021	TSA 50J	POLLED
KCF BENNETT ENCORE Z311 ET	SCHU-LAR ON TARGET 22S		
NJW 79Z Z311 ENDURE 173D ET (DLF HYF IEF MSUDF MDF)	KCF MISS REVOLUTION X338 ET		
BW 91H 100W RITA 79Z ET	NJW 73S M326 TRUST 100W ET		
	REMITALL RITA 91H		
	HF 4L BEYOND 36N		
JJPH 910J 36N ARSENAL 744T	JJPH 416D 719G PEACHES 910J		
RU BA 744T ALICE 264B	MICGIL'S DUSTER 60D 41M		
MICGIL'S ALICE 41M 83T	MICGIL'S ALICE 46K 54M		

EPD'S: BW: 4.9 // WW: 57.5 // YW: 95.9 // MM: 29.4 // TM: 58.2

- big goggles, eye catching female
- lots of depth and spring of rib

Exposed to PCL 4013 Gainer 116 from April 30, 2022- July 10, 2022. Observed bred May 16, 2022.
Preg check confirms

Lot 30 AIRRIESS-ACRES STAR 57J

PC03088770	17/01/2021	TSA 57J	POLLED
SHF CANNON Z210 C95	GV CMR X151 MR 847 Z210		
GHC SCHWARZKOPF 125E (DLF HYF IEF MSUDF)	SHF MISTY 33T Y35		
GHC MISS GALAXY ET 208Z	RU 20X GALAXY 58G		
	CARLSONS KATHY D2		
MHPH 521X ACTION 106A	TH 122 711 VICTOR 521X ET		
MHPH 106A REESE 1021F	MHPH 301W DAINTY 205Y		
ANL B&C 10Y REESE 16Y 5D	NJW 73SW18 HOMETOWN 10Y ET		
	HAROLDSONS JVJ REESE T100 16Y		

EPD'S: BW: 0.1 // WW: 54.5 // YW: 84.3 // MM: 27.7 // TM: 55.0

- red necked complete made heifer
- nicely structured and styled

Exposed to PCL 4013 Gainer 116 from April 30, 2022- July 10, 2022. Observed bred May 26, 2022.
Preg check confirms





Lot 31 AIRRIESS-ACRES FOXY LADY 62J

PC03082227 19/01/2021 TSA 62J POLLED

SHF CANNON Z210 C95
GHC SCHWARZKOPF 125E (DLF HYF IEF MSUDF)
 GHC MISS GALAXY ET 208Z

GV CMR X151 MR 847 Z210
 SHF MISTY 33T Y35
 RU 20X GALAXY 58G
 CARLSONS KATHY D2

NJW 73S M326 TRUST 100W ET
AIRRIESS-ACRES FOXY LADY 3F
 RVP 0220 BROOKLEE 5B

KCF BENNETT 3008 M326
 NJW P606 72N DAYDREAM 73S
 BOYD MASTERPIECE 0220
 TRM 5214 MILA 1095

EPD'S: BW: 0.3 // WW: 51.1 // YW: 78.8 // MM: 29.1 // TM: 54.7

-smooth made and lots of angularity in this female
 -off a really nice uddered dark red Trust daughter

AI bred to TH Masterplan 183F on March 29, 2022
 Exposed to PCL 4013 Gainer 11G April 30, 2022-July 10, 2022
 Preg check confirms safe to AI date

Lot 32 AIRRIESS-ACRES TATIANNA 74J

PC03082380 24/01/2021 TSA 74J POLLED

INNISFAIL WHR X651/723 4013 ET
PCL 4013 GAINER 11G (DLF HYF IEF MSUDF)
 PCL REAL LADY 44U 9A

EFBEEF TFL U208 TESTED X651 ET
 INNISFAIL P230 T723
 NJW 98S DURANGO 44U
 PCL REAL LADY 17T 91Y

LOEWENALL STAR 4A 10C
AIRRIESS-ACRES MISSTANGO 107G
 GHC C5 MISSTANGO 84B

SHF ALL STAR 42X A191
 LOEWEN MISS ON TARGET 29X 4A
 JSF RELOAD 59U
 GHC MISS FANTASIA 7T

EPD'S: BW: 1.8 // WW: 56.5 // YW: 84.3 // MM: 30.8 // TM: 59.1

-feminine made
 -correctly structured
 -out of productive young cow

AI bred to SHF Horizon D287 H022 ET May 2, 2022
 Exposed to AKJA 4H from May 26, 2022-July 10, 2022
 Preg check confirms safe to AI breeding





GHCTCF Miss Sybil 58D
Dam

Lot 33 **AIRRIESS-ACRES SUGAR 79J**

PC03082443	26/01/2021	TSA 79J	POLLED
INNISFAIL WHR X651/723 4013 ET		EFBEEF TFL U208 TESTED X651 ET	
PCL 4013 GAINER 11G (DLF HYF IEF MSUDF)		INNISFAIL P230 T723	
PCL REAL LADY 44U 9A		NJW 98S DURANGO 44U	
		PCL REAL LADY 17T 91Y	
		BBSF 101N WRANGLER 29W	
GHC MACH 1 25A		GHC MISS SUSIE 161T	
GHCTCF MISS SYBIL 58D		ANL P606 ULTRA 40U	
WUNDERBAR 40U MISS ULTRA 17Y		GOLDEN-HILL MISS REM 7T	

EPD'S: BW: 2.2 // WW: 54.4 // YW: 84.0 // MM: 27.4 // TM: 54.6

- smooth made
- big barreled, easy doing heifer with eye appeal

AI Bred to SHF Horizon D287 H022 ET on May 4, 2022
Exposed to AKJA 4H from May 26, 2022-July 10, 2022
Preg check confirms safe to SHF Horizon D287 H022 ET breeding date

Lot 34 **AIRRIESS-ACRES CALAMITY J 80J**

PC03082444	27/01/2021	TSA 80J	POLLED
ANL C HART 100 TAHOE 86 ET 23B		SHFTAHOE R117 T100	
GHC FARMER 53F (DLF HYF IEF)		ANL 7N MAPLE 86R	
GHC MISS GOVERNESS 40B		SHF MANNING W18 Z22	
		GHC MISS DONNA 71P	
		MHCVB 68M PROWLER 118P	
BLAIR-ATHOL CLASSIC 53U		RU 65F KIMBERLY 31K	
BLAIR-ATHOL CLASSY LASSY 111Z		BLAIR-ATHOL 13K MAJOR 101N	
BLAIR-ATHOL 101 SASS 65S		BLAIR-ATHOL 234 SASSY 189K	

EPD'S: BW: 3.5 // WW: 53.6 // YW: 90.5 // MM: 22.3 // TM: 49.1

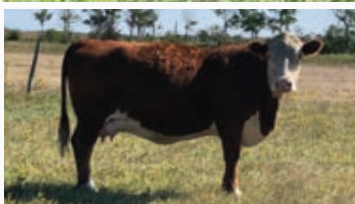
- dark red with lots of eye appeal
- deep made, easy doing type of female

AI bred April 9, 2022 to BEHM 100W Cuda 504C
Exposed to PCL 4013 Gainer 11G from April 30, 2022-July 10, 2022
Preg check confirms safe to AI breeding





GHC C5 Miss Sybil 78C
Dam



GHC C5 Miss Maple 141D
Dam



AIRRIESS ACRES

Lot 35 AIRRIESS-ACRES BLOSSOM 86J

PC03082447 01/02/2021 TSA 86J POLLED

ANL C HART 100 TAHOE 86 ET 23B
GHC FARMER 53F (DLF HYF IEF)
 GHC MISS GOVERNESS 40B

SHF TAHOE R117T100
 ANL 7N MAPLE 86R
 SHF MANNING W18 Z22
 GHC MISS DONNA 71P

BBSF 101N WRANGLER 29W
 GHC MISS SUSIE 161T
 WR DOMINO LAD 309 0614
 DXB 2J SALSA 91L

EPD'S: BW: 0.1 // WW: 46.4 // YW: 75.0 // MM: 24.2 // TM: 47.4

-phenotypically correct
 -smooth made and out of a productive cow

Exposed to PCL 4013 Gainer 11G from March 25, 2022-July 10, 2022
 Observed bred April 25, 2022
 Preg check confirms

Lot 36 AIRRIESS-ACRES MIA 98J

PC03082870 11/02/2021 TSA 98J POLLED

SHF CANNON Z210 C95
GHC SCHWARZKOPF 125E (DLF HYF IEF MSUDF)
 GHC MISS GALAXY ET 208Z

GV CMR X151 MR 847 Z210
 SHF MISTY 33T Y35
 RU 20X GALAXY 58G
 CARLSONS KATHY D2

ANL C HART 100 TAHOE 86 ET 23B
GHC C5 MISS MAPLE 141D
 GHC C5 MISS APRIL 20A

SHF TAHOE R117T100
 ANL 7N MAPLE 86R
 FCC 3T RANSOM 7W
 GHC MISS CHAN 159X

EPD'S: BW: 4.6 // WW: 62.2 // YW: 98.2 // MM: 26.4 // TM: 57.5

-moderate with lots of spring of rib
 -off a deep made Tahoe daughter with great udder set

AI bred to SHF Horizon D287 H022 ET on May 4, 2022
 Exposed to PCL 4013 Gainer 11G from May 26, 2022-July 10, 2022
 Preg check confirms safe to AI breeding date

Lot 37 AIRRIESS-ACRES JASMINE 123J

PC03082876 02/03/2021 TSA 123J POLLED

ANL C HART 100 TAHOE 86 ET 23B
GHC FARMER 53F (DLF HYF IEF)
 GHC MISS GOVERNESS 40B

SHF TAHOE R117T100
 ANL 7N MAPLE 86R
 SHF MANNING W18 Z22
 GHC MISS DONNA 71P

TLELL 50X BRAVE HEART 26Z
TLELL 26Z BONUS 24B
 TLELL 57U KALI 30Z

TLELL P606 HOT DARN ET 50X
 TLELL 59M AKY-BREAKY HEART 18W
 RVP STAR 533P CAN-AM ET 57U
 TLELL 36N KEMA 8S

EPD'S: BW: 2.8 // WW: 52.6 // YW: 85.7 // MM: 20.9 // TM: 47.2

-moderate made with lots of depth
 -dark red and out a good producing cow

AI bred to SHF Horizon D287 H022 ET on May 13, 2022
 Exposed to PCL 4013 Gainer 11G from June 3, 2022-July 10, 2022
 Observed bred June 3, 2022
 Preg check favorable to June 3, 2022 breeding



Ref Sire **SHF HORIZON D287 H022 ET {DLF HYF IEF MSUDF MDF}**

P44123593	29/01/2017	H022	POLLED
SHFYORK 19H Y02	MSU MF HUDSON 19H		
SHF DAYBREAK Y02 D287 ET {CHB DLF HYF IEF MSUDF}	LOEWEN MISS P20 10W		
SHF MISS M326 T08 ET	KCF BENNETT 3008 M326		
	SHF POSTIVE MISS 73C M15		
	KCF BENNETT 9126J R294		
GERBERANODYNE 001A	GERBER 627S HOLLY 096Y		
SHF TIME 001A D81 {DLF HYF IEF}	K&B SENTINEL 0042X		
SHFTIME 42X A140	KJ 796P TIMEWISE 006W ET		
EPDS: BW: -1.1 // WW: 59.0 // YW: 99.1 // MM: 28.5 // TM: 58.0			

Our exciting new herd sire that we own with Crittenden Land and Cattle. Great set of numbers and first calf crop of calves look great. Semen is available, contact for more information

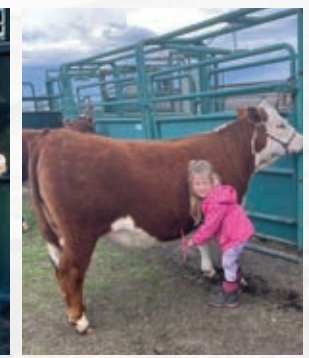
Ref Sire **PCL 4013 GAINER 11G {DLF HYF IEF MSUDF}**

PC03059038	25/02/2019	PCL 4013 Gainer 11G	POLLED
EFBEEF TFL U208 TESTED X651 ET	EFBEEF FOREMOST U208		
INNISFAIL WHR X651/723 4013 ET {DLF HYF IEF MSUDF MDF}	EFBEEF P606 MABEL R415		
INNISFAIL P230 T723	EF F745 FRANK P230		
	INNISFAIL 235 R501 ET		
	THM DURANGO 4037		
NJW 98S DURANGO 44U	NJW 9126J DEW DOMINO 98S		
PCL REAL LADY 44U 9A	PCL TORPEDO 10H 17T		
PCL REAL LADY 17T 91Y	PCL REAL LADY 23L 35R		
EPDS: BW: -0.7 // WW: 60.9 // YW: 84.6 // MM: 33.2 // TM: 63.7			

Very impressed with the calving ease and growth in his calves. Looking forward to seeing how his females calve out. Seen his dam this summer and she is still very productive at Phantom Creek.



Airriess Acres SHOW TEAM





Lot **38 HMS HI-CLIFFE 15H KASH OUT 6K**

PC03095059	09/03/2022	HMS 6K	POLLED
HAROLDSON'S TRACTION ET 50E	HMS HI-CLIFFE 50E HUGO BOSS 15H (DLF HYF IEF MSUDF)	R LEADER 6964	HAROLDSON'S MARVEL 45P 5W
WCC 161X MARVEL 5844C		SQUARE-D MANDATE 161X	SQUARE-D NADIA 6844S
JDH 4X ULTIMATE 236Z 94B		VCR 993W ULTIMATE 236Z	JDH AH VIOLETS RECRUIT 4X ET
HMS HI-CLIFFE 94B FOXY LADY 3F		TH 7IU 719T MR HEREFORD 11X	WUNDERBAR 40U MISS ULTRA 17Y
TCF GHC 11X MISS ULTRA 306A			
EPD'S: BW: 5.5 // WW: 57.6 // YW: 90.9 // MM: 27.2 // TM: 56.0			

She is our donor cow's, Ultra 306A, granddaughter. Her dam was in our CWA show string in 2018. Her sire, Hugo Boss 15H, is proving himself by the quality of his offspring. Hugo is the service sire of lot 42.



**CARMEN, BRENDA, HUNTER,
MORGAN & SYDNEY MILLHAM
HMS HI-CLIFFE**



Falcon 95F
Full Brother to Lot 39

Lot 39 HMS HI-CLIFFE KICK'N IT ET 91K {DLF HYF IEF MSUDF}

PC03095072	25/01/2022	HMS 91K	POLLED
TH 122 711 VICTOR 719T		DRF JWR PRINCE VICTOR 711	
CRR 719 CATAPULT 109 {DLF HYF IEF MDF}		KBCR 19D DOMINETTE 122	
CRR 4037 ECLIPSE 808		THM DURANGO 4037	
		CRR 420 ECLIPSE 688	
TA-BAR WLB FORMULA 035J		RU 20X BOULDER 57G	
HI-CLIFFE XCEL 64X {DLF HYF IEF}		TA-BAR 12E LAURA 135G	
GURR'S 4F KAL'S GAL 4K		GURR'S 145A FRONTLINE 4F	
		GURR'S 235Z FIRST LADY 7F	

EPD'S: BW: 4.9 // WW: 58.7 // YW: 93.9 // MM: 30.3 // TM: 59.7

A Catapult daughter out of our foundation dam, Xcel 64X. Her full brother, Falcon 95F, had a great show and breeding career. A full sister, Florida 91F, sold in the 2019 sale and has proven to be a productive cow for Double Duece Acres. Xcel 64X is granddam to Lot 42, Glamour 32G, and Juliette 93J

Lot 40 HI-CLIFFE 225D JENNIFER 2J {MDF}

PC03083193	24/02/2021	CMI 2J	POLLED
NJW 73S W18 HOMETOWN 10Y ET		SHF WONDER M326 W18 ET	
MLL 10Y ROCKY ET 225D {DLF HYF IEF MSUDF MDC}		NJW P606 72N DAYDREAM 73S	
MJT MISS POLLY 125S		REMITALL PILGRIM 93P	
		MJT MISS 7M MERLIN 225P	
WLB GLOBAL 72M 50S		HAROLDSON WLB MUTUMBO ET 72M	
WLB 50S GLORIA ET 1002A {DLF HYF IEF}		WLB 035J FLORA 14N	
HI-CLIFFE 36H NIKKI 153N		REMITALL HALLMARK 36H	
		HI-CLIFFE 20X KIM 19K	

EPD'S: BW: 2.8 // WW: 50.9 // YW: 89.2 // MM: 25.0 // TM: 50.5

Jennifer 2J is a maternal sister to Gloria 2G, she sold in the 2020 sale to Sky Virtu Ranch. Another maternal sister, Felicity 2F, was a yearling heifer class winner in Bonanza 2019, and is a powerful, productive producer in our herd.

Bred to TH Big Country 537G on May 9, 2022





MJT 15C Royal 608H
Service Sire to Lot 41



MLL 10Y Rocky ET 225D
2019 World Champion Hereford Bull
Sire to Lots 40-42



41

Lot 41 HMS HI-CLIFFE JENNY 13J {MDF}

PC03084253	22/02/2021	HMS 13J	POLLED
NJW 73S W18 HOMETOWN 10Y ET	SHF WONDER M326 W18 ET		
MLL 10Y ROCKY ET 225D (DLF HYF IEF MSUDF MDC)	NJW P606 72N DAYDREAM 73S		
MJT MISS POLLY 125S	REMITALL PILGRIM 93P		
	MJT MISS 7M MERLIN 225P		
	REMITALL SUPER DUTY 42S		
SQUARE-D 42S PROGRESS 323Y	SQUARE-D NADIA 323P		
WCC 323Y BEAUTY 4927B	SQUARE-D REPORT 593R		
SQUARE-D LASSIE 9207W	BNC 5L PENNY LANE 207N		

EPD'S: BW: 6.1 // WW: 59.8 // YW: 106.4 // MM: 27.7 // TM: 57.6

Jenny 13J, another powerful daughter of the World Champion Rocky 225D. Her dam was one of dad's pick from the Wascana Dispersal; a broody, deep bodied, well udder cow. Her service sire, Royal 608H, was Grand Champion at the PA Fair this summer. We are excited for our/his future.

Bred to MJT 15C Royal 608H on June 10, 2022



Glamour 32G
Full Sister to Lot 42



Juliette 93J
Full Sister to Lot 42
Purchased by MJT Cattle Co. in the CWA 2021 sale

Lot 42 HMS HI-CLIFFE 225D JUKEBOX 32J {DLF HYF IEF MSUDF MDC}

PC03084255	15/02/2021	HMS 32J	POLLED
NJW 73S W18 HOMETOWN 10Y ET	SHF WONDER M326 W18 ET		
MLL 10Y ROCKY ET 225D (DLF HYF IEF MSUDF MDC)	NJW P606 72N DAYDREAM 73S		
MJT MISS POLLY 125S	REMITALL PILGRIM 93P		
	MJT MISS 7M MERLIN 225P		
	TH 71U 719T MR HEREFORD 11X		
TCFJM 11X THE GOODS 305A	JVJ 18L MISS BOOMER 9Y		
HMS HI-CLIFFE 305A DIAMOND 64D (DLF HYF IEF MSUDF)	TA-BAR WLB FORMULA 035J		
HI-CLIFFE XCEL 64X	GURR'S 4F KAL'S GAL 4K		

EPD'S: BW: 4.1 // WW: 57.1 // YW: 91.6 // MM: 31.9 // TM: 60.5

Jukebox 32J, a full sister to our Glamour 32G and Juliette ET 93J, sold at CWA' 21 to MJT Cattle Co. This cross has been extremely consistent for us, each calf having a similar stamp. They are all well marked, deep chested, wide over the top and from behind, yet feminine thru the front end; the type we are all looking for. Here is your chance to own a full sibling of Glamour 32G.

Bred to HMS 50E Hugo Boss 15H, on June 2, 2022



42

HMS HI-CLIFFE



- Homozygous Polled
 - A flawless udder; typical of our Impact daughters. This female in her prime offers donor potential. Her 2021 bull calf was one of the first picked out of the bull pen this spring. She ranks in the top 10% of the breed for FMI and the top 15% for marbling. Her mother, GHC G5 Governess 127C might well be our first choice in our donor line-up. Don't overlook her daughter at foot.

Observed bred on May 10, 2022 and 18, 2022 to GHC C5 Attention 155E Pregnancy examined safe.



GHC C5 Attention 155E
 Service Sire to Lot 43

Lot 43 GHC MISS LEGEND 167F {DLF HYF IEF}

PC03056664	17/08/2018	AKJA 167F	POLLED
KCF BENNETT REVOLUTION X51		MSU TCF REVOLUTION 4R	
KCF BENNETT IMPACT B45 I (DLF HYF IEF)		KCF MISS PROFICIENT U201	
KCF MISS M326 T56		KCF BENNETT 3008 M326	
		KCF MISS P606 R140	
SHF MANNINGW18 Z22		SHF WONDER M326 W18 ET	
GHC C5 MISS GOVERNESS 127C (DLF HYF IEF MSUDF)		SHF PROGRESS T148	
GHC C5 MISS UNIQUE 181A		BBSF 101NWRANGLER 29W	
		GHC MISS DEANNE 40T	
EPD'S: BW: 3.0 // WW: 53.3 // YW: 85.6 // MM: 26.5 // TM: 53.2			

Lot 44 CRITT MISS YORK 38K {DLF HYF IEF}

PC03092955	10/02/2022	AKJA 38K	POLLED
SHF DAYBREAK Y02 D287 ET		SHFYORK 19HY02	
SHF HORIZON D287 H022 ET (DLF HYF IEF MSUDF MDF)		SHF MISS M326 T08 ET	
SHFTIME 001A D81		GERBER ANODYNE 001A	
		SHFTIME 42X A140	
KCF BENNETT IMPACT B45I		KCF BENNETT REVOLUTION X51	
GHC MISS LEGEND 167F (DLF HYF IEF)		KCF MISS M326 T56	
GHC C5 MISS GOVERNESS 127C		SHF MANNINGW18 Z22	
		GHC C5 MISS UNIQUE 181A	
EPD'S: BW: 1.2 // WW: 57.0 // YW: 93.6 // MM: 27.8 // TM: 56.3			



- Homozygous Polled
 - This fancy goggle-eyed heifer is a twin to another female which was grafted onto another cow. She combines many of the high maternal genetics in our program. She ranks in the top 1% of the breed for MPI and FMI, the top 5% for CE and the top 9% for marbling. Born with a mere 71 pound birth weight and could well be our sleeper in the line-up.

- A younger version of the power of this great cow family. Eye-appealing with a competitive nature, this GHC C5 Attention 155E daughter offers strong maternal traits and carcass values. She ranks in the top 8% of the breed for milk and total maternal and ranks in the top 15% for marbling. She was born unassisted with a birth weight of 86 pounds. This prospect will fit the requirements of those who would like to be competitive and end up with a front pasture foundation female. She sells choice with her maternal sister.



Choice
LOT

Lot 45 **CRITT MISS QUEEN 64K (DLF HYF IEF MSUDF)**

PC03092940	22/02/2022	AKJA 64K	POLLED
SHF CANNON Z210 C95		GV CMR X151 MR 847 Z210	
GHC C5 ATTENTION 155E (DLF HYF IEF MSUDF MDF)		SHF MISTY 33T Y35	
GHC C5 MISS DUCHESS 58C		NJW 100W FOUNDATION 54Z ET	
		GHC MISS UNIQUE 25Z	
SHFALL STAR 42XA191		K&B SENTINEL 0042X	
GHC MISS HOLLY ET 125C (DLF HYF IEF)		SHF MISS M326 T08 ET	
GHC MISS WILMA 168X		MCCOY 47NTHROTTLE 98S	
		GHC MISS PHILIS 33S	
EPD'S: BW: 2.9 // WW: 61.8 // YW: 99.3 // MM: 34.6 // TM: 65.5			

Lot 45A **CRITT MISS HOLLIE 25J (DLF HYF IEF MSUDF)**

PC03081609	01/02/2021	AKJA 25J	POLLED
EFBEEF TFL U208 TESTED X651 ET		EFBEEF FOREMOST U208	
INNISFAIL WHR X651/723 4013 ET (DLF HYF IEF MSUDF MDF)		EFBEEF P606 MABEL R415	
INNISFAIL P230 T723		EF F745 FRANK P230	
		INNISFAIL 235 R501 ET	
SHFALL STAR 42XA191		K&B SENTINEL 0042X	
GHC MISS HOLLY ET 125C (DLF HYF IEF)		SHF MISS M326 T08 ET	
GHC MISS WILMA 168X		MCCOY 47NTHROTTLE 98S	
		GHC MISS PHILIS 33S	
EPD'S: BW: 5.8 // WW: 79.8 // YW: 129.8 // MM: 29.5 // TM: 69.4			

- Outstanding foundation opportunity!
 - Homozygous Polled
 - No other 2021 born Polled female in the Canadian Hereford Association data base can match her combination of top 1% for WW, YW, FMI, and PWG; top 2% for marbling and the top 5% for CWT and Total Maternal. Her sire, "Innisfail" is an amazing trait leader in ten categories. Critt Miss Hollie 25J stems from one of our most prolific donor cow families in our program. Packed with performance, she weaned at 833 pounds in a historically dry pasture season and wintered to a yearling weight of 1115 pounds. She sells choice with her maternal sister. Pregnancy examined safe to a May 4, 2022 Service to GHC C5 Attention 155E and ran with him until June 30, 2022



Choice
LOT

CRITTENDEN LAND & CATTLE



Lot 46 CRITT MISSYORK 26K {DLF HYF IEF MSUDF}

PC03092930	07/02/2022	AKJA 26K	POLLED
SHF DAYBREAK Y02 D287 ET	SHF MISS M326 T08 ET	SHFYORK 19H Y02	
SHF HORIZON D287 H022 ET (DLF HYF IEF MSUDF MDF)	GERBER ANODYNE 001A	SHFTIME 42X A140	
SHF TIME 001A D81			
GHCATLAS BEEFMAN 135Z	GHC JACKPOT 185W		
GHC MISS ATLAS 85C	GHC MISS ROSEANNE 3N		
LAMPOR'S 82W VICTORIA 42Z	BAR-H CHALLENGER 82W	LAMPOR'S 75U VICTORIA 49X	

EPD'S: BW: -1.6 // WW: 47.8 // YW: 72.4 // MM: 25.8 // TM: 49.7

- Homozygous Polled
 - The progeny of SHF Horizon have been highly acceptable for us, Airries Acres and Sandhills Farm. Critt Miss York 26K, is a February daughter of Horizon and ranks in the top 1% of the breed for CE, BW, MCE and MPI. She was born with a very moderate birth weight of 74 pounds. Her mother is a herd bull producer and the mother of GHC Dividend 48E working at Airries Acres in addition to sons selected by Mac Ag Ltd. and Turtle River Ranch. Check out this calving ease prospect.

Lot 47 CRITT MISS HOLLIE 59J {DLF HYF IEF MSUDF}

PC03081623	13/02/2021	AKJA 59J	POLLED
EFBEEF TFL U208 TESTED X651 ET	EFBEEF P606 MABEL R415	EFBEEF FOREMOST U208	
INNISFAIL WHR X651/723 4013 ET (DLF HYF IEF MSUDF MDF)	EF F745 FRANK P230	INNISFAIL P230 T723	
KCF BENNETT IMPACT B451	KCF BENNETT REVOLUTION X51		
GHC C5 MISS LEGEND 166E	KCF MISS M326 T56		
GHC C5 MISS GOVERNESS 136C	SHF MANNINGW18 Z22	GHC C5 MISS UNIQUE 178A	

EPD'S: BW: 4.9 // WW: 70.2 // YW: 114.3 // MM: 29.2 // TM: 64.3

- Homozygous Polled
 - A paternal sister to our lead-off female, Critt Miss Hollie 25J, by the multi-trait leader "Innisfail". Stylish, broody with added color and pigment. She ranks in the top 1% of the breed for FMI, the top 3% for WW and YW, the top 8% for marbling and the top 10% for Total Maternal. She was born at 87 pounds, weaned at 729 pounds and had a 365-day weight of 1040 pounds. Her mother is a solid brood matron with a son working at Teron Farms, Inc.

Pregnancy examined safe to a June 10, 2022
 Service to GHC C5 Attention 155E and ran with him until July 17, 2022





Lot 48 CRITT ARCHER 7K (DLF HYF IEF MSUDF)

PC03092893	29/01/2022	AKJA 7K	POLLED
SHF DAYBREAK Y02 D287 ET	SHF MISS M326 T08 ET	SHFYORK 19HY02	
SHF HORIZON D287 H022 ET (DLF HYF IEF MSUDF MDF)	GERBER ANODYNE 001A	SHFTIME 42X A140	
SHFTIME 001A D81			
KCF BENNETT IMPACT B45I	KCF BENNETT REVOLUTION X5I		
GHC C5 MISS LEGEND 169E	KCF MISS M326 T56		
GHC C5 MISS BEAUTY 134C	GHC MONOPOLY 162Z		
	GHC C5 MISS UNIQUE 187Z		

EPD'S: BW: 0.1 // WW: 52.9 // YW: 88.1 // MM: 26.0 // TM: 52.5

- This herd sire prospect is bred to fit both pastures – cows or heifers – with a 81 pound birth weight. His sire, Horizon, is the breed leading homo polled calving ease sire. Critt Archer 7K ranks in the top 3% of the breed for MPI and FMI, top 5% for marbling and the top 8% for CE, BW and MCE. His maternal sister was our high selling heifer calf last fall to C&L Hereford Ranch in Wisconsin. His mother is an ideal beef cow...highly maternal and structurally attractive. He looks like he might pop small scurs.



GHC C5 Miss Legend ET 2E
Dam Lot 49



HOWARD AND SHARON CRITTENDEN

Lot 49 CRITT OPTION 28K (DLF HYF IEF MSUDF)

PC03092896	09/02/2022	AKJA 28K	POLLED
SHF DAYBREAK Y02 D287 ET	SHF MISS M326 T08 ET	SHFYORK 19HY02	
SHF HORIZON D287 H022 ET (DLF HYF IEF MSUDF MDF)	GERBER ANODYNE 001A	SHFTIME 42X A140	
SHFTIME 001A D81			
KCF BENNETT IMPACT B45I	KCF BENNETT REVOLUTION X5I		
GHC C5 MISS LEGEND ET 2E (DLF HYF IEF MSUDF)	BBSF 101NWRANGLER 29W		
GHC MISS UNIQUE 25Z	GHC MISS NANCY 80P		

EPD'S: BW: -1.1 // WW: 50.7 // YW: 87.2 // MM: 26.7 // TM: 52.1

-76 lb BW, Homo Polled. Dark red goggled eyed calf. His mother 2E is always picked out by visitors. 2E plus two maternal sisters and grandmother are donor cows here. Great data on 28K top 1% of the breed for CE, BW, MCE, SCF, Udder, Teat, MPI and FMI. Top 5% of the breed for Marbling. Should be good for cows or the heifer pen. Top maternal genetics here.





This is our very best first calver. When Rob came to see the herd, I told him she wasn't for sale! But after some persuasion we decided to offer her. I think she'll make a great addition to anyone's herd.

We are offering choice with her heifer calf. We retain the right to a future flush.

Choice
LOT

Lot 50

JHF 10D BELLE 18H

PC03077671	23/02/2020	RAJ 18H	POLLED
NJW 78P TWENTYTWELVE 190Z ET ELM-LODGE DEEPWATER 10D (DLF HYF IEF) ELM-LODGE WHOLE SHEBANG 56V	NJW 73S M326 TRUST 100W ET NJW BW LADYSPORT DEW 78P ET CC CX UNITED 52S ET ELM-LODGE 42W MELVA 28L	WLB ELI 10H 83T ANL SBS 36N PEBBLES ET 33R REMITALL FIRST CLASS ET 113R REMITALL BELLE ET 19M	
ANL 83T ELI ET 8X JHF BELLE 20B REMITALL BELLE 89T			
EPD'S: BW: 2.6 // WW: 44.4 // YW: 76.6 // MM: 15.7 // TM: 37.9			

Lot 50A

JHF 9IG BELLE 40K

APPLIED FOR	27/02/2022	RAJ 18H	POLLED
KCF BENNETT IMPACT B451 MCCOY B451 TOTEM 9IG MCCOY 5Z SUSIE 20C	KCF BENNETT REVOLUTION X51 KCF MISS M326 T56 MCCOY 743 FACEOFF 5Z MCCOY 70Y SUSIE 214A		
ELM-LODGE DEEPWATER 10D JHF 10D BELLE 18H JHF BELLE 20B	NJW 78P TWENTYTWELVE 190Z ET ELM-LODGE WHOLE SHEBANG 56W ANL 83T ELI ET 8X REMITALL BELLE 89T		
EPD'S: BW: 1.3 // WW: 45.9 // YW: 77.1 // MM: 19.0 // TM: 41.9			



Choice
LOT



Lot 51

JHF 10D GRITA 31K

APPLIED FOR	22/02/2022	RAJ 31K	POLLED
NJW 78P TWENTYTWELVE 190Z ET			NJW 73S M326 TRUST 100W ET
ELM-LODGE DEEPWATER 10D (DLF HYF IEF)			NJW BW LADYSPORT DEW 78P ET
ELM-LODGE WHOLE SHEBANG 56W			CC CX UNITED 52S ET
			ELM-LODGE 42W MELVA 28L
NJW 79Z 22Z HEAVY DUTY 72C ET			NJW 67U 28M BIG MAX 22Z
JHF 72Z GRITA 16G			BW 91H 100W RITA 79Z ET
MA 83T GEMINI 38T 14X			WLB ELI 10H 83T
			MEADOW-ACRES 62P GEMINI 38T
EPD'S: BW: 4.4 // WW: 56.2 // YW: 94.4 // MM: 24.2 // TM: 52.1			

This heavy duty granddaughter is very attractive, she stuck out during pasture tours. She is a paternal sister to the cow we are offering and has the potential to grow into a great cow.



RAYMOND, LINDSAY & THOMAS JOHNSTON



OUR NEWEST ADDITION - CASSIDY JOHNSTON



Lot 52

JUST-ACRE PAULA 35J

PC03090114	03/04/2021	JAF 35J	POLLED
CS BOOMER 29F		REMITALL BOOMER 46B	
XLPTIMBER ET 2B (DLF HYF IEF)		CS MISS 1ST FLAG 21A	
CARLSONS KATHY D2		CARLSONS NEW IDEA B46	
		MEL-JON 680K ROSEANNE 18R	
SQUARE-D PERFORMER 806D		NJW 51U 4037 DURAMAX 8X	
SQUARE-D PAULA 331F		SQUARE-D MAYA 206A	
SQUARE-D NADIA 553S		SQUARE-D NAZDAC 704K	
		SQUARE-D KEEPSAKE 337F	

EPD'S: BW: 3.9 // WW: 51.9 // YW: 79.1 // MM: 23.6 // TM: 49.6

35J is a dark red, long bodied heifer with lots of added pigment. Her dam is an easy doing cow who raises a big calf every year. Expect longevity and strong maternal instinct from this Timber daughter. Her sire is still walking pastures at 8 years of age. We are using a maternal brother on our commercial cows.
BW 94 lbs

Exposed to Just-Acre Matador 7F from June 14, 2022 to August 19, 2022.



Lot 53

JUST-ACRE MISS NADDIA 40J

PC03090115	04/04/2021	JAF 40J	POLLED
NJW 73S 22Z MIGHTY MAX 69B ET		NJW 67U 28M BIG MAX 22Z	
SQUARE-D BALBOA 765E (DLF HYF IEF MSUDF)		NJW P606 72N DAYDREAM 73S	
WCC 34S STACEY 3165A		TRIPLE-A 14M STOCKY 34S	
		SQUARE-D RITA 8165U	
KIRBYLONE PINE SANTANA ET 91S		RU 20X GALAXY 58G	
SQP HH 91S NADDIA 120B		WTK 21F SYBIL 109J	
SQUARE-D NADDIA 120N		SQUARE-D NAZDAC 704K	
		DANINE DIAMOND 2H 2K	

EPD'S: BW: 3.0 // WW: 44.4 // YW: 73.7 // MM: 26.0 // TM: 48.2

A moderate framed heifer with a fantastic hair coat, 40J will go out and work while still maintaining her condition. Her dam is still going strong at 8 years old. She is a heifer that has caught our eye from day 1. Her sire, Square-D Balboa 765E produced thick calves that pushed down the scales at weaning time.
BW 94 lbs

Exposed to Just-Acre Matador 7F from June 14, 2022 to August 19, 2022.



Lot 54

JUST-ACRE DAYDREAM 9J

PC03096889	23/03/2021	JAF 9J	POLLED
XLP 11X MATADOR 108B		TH 71U 719T MR HEREFORD 11X	
JUSTACRE MATADOR 7F (DLF HYF IEF MSUDF)		LIAN 49S WILMA 108W	
XLP 75Z KAIREE 97D		ANLA XLP ACTION ET 75Z	
		RVP 45S WATERFALL 97W	
SQUARE-D CENTURY 957B		NJW 73S W18 HOMEGROWN 8Y ET	
WCC 9567W DAYDREAM 967G		SQUARE-D JAEDEN 257P	
SQUARE-D ANGEL 9567W		SQUARE-D LOGAN 209P	
		SQUARE-D MARINI 567N	

EPD'S: BW: 2.5 // WW: 46.6 // YW: 81.0 // MM: 26.7 // TM: 50.0

9J is a heifer that combines performance and calving ease in a neat package. She will mature into a powerhouse cow with a beautiful udder. Her sire Just-Acre Matador 7F has been our go-to heifer bull for the last several years. We calved out the first Matador daughters this spring, and udder quality did not disappoint! Nice, square udders with good suspension and small teats. Her dam is a moderate framed cow we bought from the Wascana Cattle Co dispersal.
BW 86 lbs

Exposed to XLP Timber ET 2B from June 11, 2022 to August 19, 2022.

Ref Sire

XLP TIMBER ET 2B (DLF HYF IEF)

PC03006326 03/01/2014 XLP 2B POLLED

REMITALL BOOMER 46B
CS BOOMER 29F (CHB DLF HYF IEF)
CS MISS 1ST FLAG 21A

REMITALL KEYNOTE 20X
REMITALL SALLY'S LASS ET 120X
GS CHECKERED FLAG
DS MS TOP PRIORITY 826

CARLSONS NEW IDEA B46
CARLSONS KATHY D2 (DLF HYF IEF)
MEL-JON 680K ROSEANNE 18R

WINTUN SLINGSHOT 4W
ANL MISS 117 435S 14W
JUSTAMERE 425E MAINLINE 680K
HABOK'S BANNER OAK 22C 145J

EPDS: BW: 1.2 // WW: 45.0 // YW: 70.8 // MM: 21.0 // TM: 43.5



Ref Sire

JUST-ACRE MATADOR 7F (DLF HYF IEF MSUDF)

PC03050259 16/03/2018 JAF 7F POLLED

TH 71U 719T MR HEREFORD 11X
XLP 11X MATADOR 108B (CHB DLF HYF IEF)
LIAN 49S WILMA 108W

TH 122 711VICTOR 719T
TH 7N 45P RITA 71U
MCCOY 55M ABSOLUTE 49S
LIAN 8E MADEIRA 130M

ANLA XLPACITION ET 75Z
XLP 75Z KAIREE 97D
RVP 45S WATERFALL 97W

TH 89T 743 UNTAPPED 425X ET
ANL PBG 3N SPLENDOUR 143T
STAR 2013 BATTLE CRY 45S
STAR RVPH 80P KARRI 338T ET

EPDS: BW: 0.6 // WW: 43.6 // YW: 66.2 // MM: 25.9 // TM: 47.7



**JEFF, KRISTINA, JILLIAN, EMMA & MATTHEW JUST
JUST ACRE FARMS**



Lot 55 ROCK-N-ROLL FLAMIN' HOT 35J

PC03092822	20/12/2021	KRS 35J	POLLED
H RW ALL IN 7165 ET	JDH JJD 9Y 485T ALL IN 96B ET		
HARVIEVENTURE 219G (DLF HYF IEF MSUDF)	EXR TERRI 489		
HARVIE MS FIREFLY 125Y	HARVIE WINSTON 5W		
	HARVIE MS FIREFLY ET 55W		
	REMITALL KEYNOTE 20X		
HARVIE KEYNOTE 127A	HARVIE MS FIREFLY 30T		
ROCK-N-ROLL HOT TOTTI 15D	TALECO 40M FRANK 20S		
ROCK-N-ROLL TATIANNA 51W	TALECO 74U JANE 5G		

EPD'S: BW: 5.7 // WW: 56.0 // YW: 89.8 // MM: 21.5 // TM: 49.5

This heifer calf has a few extra weeks of age than others in the sale. She represents the first calf crop of Harvie Venture, high selling bull calf in their dispersal.

Lot 56 ROCK-N-ROLL JAKOTA 326J

PC03081202	26/03/2021	KRS 326J	POLLED
REMITALL-WEST GAME DAY ET 74Y	SHFWONDER M326 W18 ET		
WBAR-M 74Y GAME ON ET 14D (DLF HYF IEF MSUDF)	REMITALL MARVEL 78T		
REMITALL RITA 13T	REMITALL PATRIOT ET 13P		
	REMITALL RITA 246K		
	TH 89T 743 UNTAPPED 425X ET		
ANLA XLP ACTION ET 75Z	ANL PBG 3N SPLENDOR 143T		
XLP 75Z DAKOTA 48B	BNMHPH 13P HEAT 101S		
XLP 101S DAKOTA 48Z	AKFH 106E DAKOTA 48H		

EPD'S: BW: 5.9 // WW: 57.4 // YW: 96.1 // MM: 23.4 // TM: 52.1

Jakota is bred to RSK SCK 8Y JURY 25J who is our newest herdsire addition and will be our go to in the future.

Observed bred to RSK SCK 8Y JURY 25J on May 11, 2022
Preg check safe





Lot 57

LV NETTIE L 78K

PC03094001	03/03/2022	LM 78K	POLLED
HAROLDSON'S UPGRADE T100 33D		SHFTAHOE R117 T100	
HAROLDSON'S UNITED 33D 36G (DLF HYF IEF MSUDF MDF)		MOHICAN MISSEY 93W	
HAROLDSON'S WLC MIRA ET 52B		NJW 735 W18 HOMETOWN 10Y ET	
		HAROLDSON'S 37H MIRA ET 62K	
HAROLDSON'S TANK 45P 18D		NJW FHF 9710 TANK 45P	
LV NETTIE L 400F		HAROLDSON'S LUCY T100 80X	
LV NETTIE L 32C		MEADOW-ACRES 29FTORCH ET 118W	
		REMITALL NETTIE 122R	

EPD'S: BW: 6.6 // WW: 63.6 // YW: 105.4 // MM: 25.1 // TM: 56.9

A flashy United daughter here. This March calf is sound in her design, with plenty of substance. Generations of productive, good uddered females standing behind this one.



**DAYLE & DIXIE
LOGAN, BRIANNA, KORBIN & JACE MARTINSON
LV FARMS LTD.**



Haroldson's United 33D 36G
Sire

Junior Incentive Program

As a supporter of the Canadian Junior Hereford Association Lottery program, Instead of offering a competition to earn sale credits we as a sale have decided to match Canadian Junior Hereford Lottery heifer lottery contribution. If a winner of the CJHA Heifer lottery purchases a female at the 2022 Lone Pine/Airriess Acres Invitational Event and chooses to use the lottery contribution for their purchase in this sale we will match the contribution. As an example if the CJHA has awarded you a \$250 heifer lottery credit the sale will offer you an additional \$250 credit for this sale.

OR

If you haven't been selected in the CJHA Heifer Lottery but have shown an animal that was purchased in the sale in a previous year just send us a photo of that animal at the show prior to October 7 and you will earn a \$250 credit in the 2022 sale.

OR

If you're a Junior or 4-H member who's purchasing from the sale for the first time send us a photo before August 2023 of the animal you've purchased. The photo can be either at a show or in the pasture and you will earn a credit in the 2023 sale for \$250.

Juniors are limited to one credit per person.

Terms & Conditions

Terms: The terms of the sale are cash or cheque, payable at par at sale location. The right of property shall not pass until after settlement has been made; no invoicing on buyers in attendance unless previous arrangements have been made. Every animal sells to the highest bidder and in cases of disputes, the auctioneer's decision will be final. Announcements from the auction block will take precedence over the printed matter in the catalogue. Current exchange rates will be announced sale day. All monies are in Canadian funds.

Certificate of Registration: Each animal will carry papers issued by the Canadian Hereford Association. A certificate of registry duly transferred will be furnished to the buyer for each animal after payment has been made.

Pedigree Estimates: Pedigree Estimates (PE) are created on the projected mating of the animal's sire and dam based on averages of the two, creating estimated values that do not hold the same accuracy of actual EPDs issued from the association and should be used as such.

Health: All animals in the sale have met all necessary health requirements.

Guarantee: Each animal becomes the purchaser's risk immediately after the animal is sold. All animals in this sale will be sold under the terms and guarantees set forth by the Canadian Hereford Association with regards to health, freedom from defects and from both reproductive and specific genetic unsoundness.

Pregnancy Information: All serviceable age females have been pregnancy examined by an accredited veterinarian.

International Buyers: Cattle or genetics sold to buyers outside of Canada may require export permits and health certificates. The buyer will be responsible for the costs in producing these export documents.

Liabilities: All persons attend the sale at their own risk. The seller, facility owner and sale manager assume no liability, legal or otherwise, for any accidents that occur. It is understood that T Bar C Cattle Co. (2013) Ltd. is acting only as a medium between buyer and seller and is not responsible for any failure on the part of either party to live up to his obligations. Neither does T Bar C Cattle Co. (2013) Ltd. assume any financial obligations to collect or enforce collection of any monies between parties and any legal action that may, in exceptional cases, be taken must be between the buyer and the seller. T Bar C Cattle Co. (2013) Ltd. assumes no responsibility for any credit extended by the seller to the buyer. The buyer must look to the seller for fulfillment of all guarantees and representations made hereunder.

Delivery: Assistance will be given in getting your purchases home. Each animal becomes the risk of the purchaser as soon as sold.

Phone, Mail, Wire Bids: Bidders unable to attend the sale may phone, wire or mail their bids and instructions to the sale manager, auctioneer or special representatives. Bids must be received in sufficient time prior to the sale.

Insurance: We strongly recommend that insurance is purchased for full value.

Consignors

Lone Pine Cattle Services.....Lots 1-21

Rob & Dawn O'Connor & Family
Box 158
Vibank, SK S0G 4Y0
Rob's cell: 306-550-4890
roconnor@aginmotion.ca
www.lonepinecattle.net

Airriess Acres.....Lots 22-37

Trevor & Sara Airriess
Box 1073
Wadena, SK S0A 4J0
Trevor's Cell: 306-338-7753
Sara's Cell: 306-338-8310
airriessacres@hotmail.com

HMS Hi-Cliffe.....Lots 38-42

The Millham Family
Hunter, Morgan & Sydney
Carmen & Brenda Millham
Box 382 Outlook, SK S0L 2N0
Carmen: 306-867-4231
Brenda cell: 306-270-5524
carm.dvm@sasktel.net | www.hmshicliffe.com

Crittenden Land & Cattle.....Lots 43-49

Crittenden Land & Cattle
Howard and Sharon: 306-963-2414
Howard's Cell: 306-963-7880
Jim and Kari: 306-220-1229
Grant and Lindsay: 306-917-7782
h.s.crittenden@sasktel.net

JHF Herefords.....Lots 50-51

Raymond, Lindsay, Thomas and Cassidy Johnson
13 RR 1
Leross, SK S0A 2C0
306-795-7772

Just Acre Farms.....Lots 52-54

Jeff, Kristina, Jillian, Emma & Matthew Just
Box 1084
Yorkton, SK S3N 2X3
Kristina: 306-621-9874
Jillian: 306-620-8583

Rock-N-Roll Polled Herefords.....Lots 55-56

Paul Kress
Box 53
Kendal, SK S0G 2P0
306-424-2760

LV Farms Ltd.....Lots 57

Dayle & Dixie
Logan, Brianna, Korbin & Jace Martinson
Box 324
Midale, SK S0C 1S0
306-458-7170



Return Undeliverable
Canadian Addresses

T Bar C Cattle Co. Ltd.
Box 2330
Warman, SK S0K 4S0

